

ORGANIZATIONS

University of California Davis and **Advanced Environmental Methods, LLC** are developing and promoting a human urine nutrient recovery technology to reduce nutrient loading on wastewater treatment systems, produce a high purity and commercially viable fertilizer, with a simple design and small footprint to allow decentralized treatment of urine.

The primary academic mission is of the **Program in Community & Agroecology** (PICA) to engage students with sustainability through practical experience and the sharing of community based knowledge. Emerging themes of discussion include, but are not limited to: power dynamics (racism, classism, sexism, etc.), lack of representation, knowledge validation, staff and student relationships (student autonomy), student accountability, and intentional inclusivity. PICA will offer a unique space to students of color in an effort to avoid, mitigate, and eliminate racism, classism, tokenization, white privilege, oppression, marginalization, identity policing, and space policing in historically white garden spaces and take steps towards accountability, truth telling and positive change. Through practical training in agroecology and organic gardening, student involvement in campus and community gardens, and the development of local composting projects, PICA students are able to integrate Agroecological principles of sustainability, food production, food justice, and social justice into everyday life.

The **Bike Coop** is a volunteer-run, collective, non-profit space, independent from the University, that provides a fully functioning bike shop to UC Santa Cruz students, faculty, and staff as well as the larger Santa Cruz community. Our goal is to promote bicycles as a healthy, sustainable form of transportation, and to provide a space where community members can access bicycle knowledge, tools, and parts. We aim to create a space where persons of any skill level can feel comfortable maintaining their bicycles. Our services are donation based as part of our vision of a learning space accessible to all.

Fossil Free UCSC is a student-run, grassroots climate justice campaign demanding that the University of California divest from fossil fuels. The UC system currently has about \$2.6 billion invested in the top two hundred fossil fuel companies, and is thus profiting off of climate change. Marginalized communities of people around the world are disproportionately experiencing the consequences. Throughout the past five years of persistent student activism, Fossil Free UCSC has been committed to holding the UC accountable for ceasing this injustice, and they will continue to do so by actively fighting for a more equitable and sustainable world.

The mission of the **Natural Reserve System** is to contribute to the understanding and wise management of the Earth and its natural systems by supporting university-level education, research, and public service at protected natural areas throughout California. The UC Santa Cruz Natural Reserves include Ano Nuevo Island Reserve, Younger Lagoon Reserve, Fort Ord Natural Reserve, Landels-Hill Big Creek Reserve and the UCSC Campus Natural Reserve. The wide range of habitats, from fog-enshrouded redwood forest to maritime chaparral, provide an unparalleled natural laboratory for marine and terrestrial research and serve as study sites for University scientists and students. Students participate in internships, conduct individual or group research projects and take class field trips on our reserves.

The **Community Water Center** (CWC) believes all communities should have access to clean, safe, and affordable water. That's why we work as a catalyst for community-driven water solutions through organizing, education, and advocacy. We build strategic grassroots capacity to address water challenges in small, rural, low-income communities and communities of color. Safe water is a basic human right, not a privilege. Yet each year, more than one million Californians are exposed to unsafe drinking water from the taps in their homes and schools. The water crisis impacts low-income communities the most, making it harder for working families to get by. Though water problems exist statewide, they are concentrated in California's agricultural communities, which are overwhelmingly Latino, typically high-poverty and lacking in political voice. Those most affected by the lack of safe water are also those least able to afford the extra cost of alternative water sources.

The **Homeless Garden Project** provides job training, transitional employment and support services to people who are experiencing homelessness. HGP's vibrant education and volunteer program for the broad community blends formal, experiential and service-learning. The programs take place in our 3-acre organic farm and related enterprises. Our Mission: In the soil of our urban farm and garden, people find the tools they need to build a home in the world. Our Vision: We envision a thriving and inclusive community, workforce, and local food system. We value: The capacity of every individual for growth and renewal. The joy that comes from growing and sharing healthy food. The well-being created by vibrant social and natural ecosystems.

Natural Bridges State Beach is a local state park that features a natural bridge and beach, a hiking trail, tidepools, and easy-to-access grove that hosts overwintering Monarch butterflies. Natural Bridges boundaries includes a Marine Protected Area, where the animals and plants are specifically protected from collection. In addition to several habitats it is also the outlet of Moore Creek, which flows down from campus and feeds our marsh.

Santa Cruz Climate Action Network (SCCAN) seeks to address the current Climate Change Emergency, recognizing that failure to act quickly will have devastating effects on future generations of humans and other life forms. Our actions include 1. public education and outreach, including monthly public meetings; 2. coordinating with other interested groups; 3. maintaining email lists and sending frequent event updates; 4. teaching Climate Change in public schools; 5. supporting clean alternatives to single occupancy auto transport; 6. supporting divestment from Fossil Fuel financing and support; 7. supporting the banning of fracking and other polluting fossil fuel extraction; 8. promoting Transport Demand Management as a prerequisite to funding new fossil fuel infrastructure; 9. membership in the Santa Cruz "Climate Action Task Force."

The **Surfrider Foundation** is a nonprofit environmental organization with an international network that boasts over 250,000 supporters and 100 chapters worldwide. Together we are dedicated to the protection and enjoyment of oceans, waves, and beaches through a powerful activist network. Founded in 1991, our Santa Cruz Chapter is 100% volunteer driven and united by our love of and respect for the ocean and by our desire for clean water, healthy beaches and access to

such sites. Surfrider was founded by surfers and many of us surf whenever we can. However, our members come from many walks of life, and anyone who shares our goals is welcome to join us!

The City of Santa Cruz's award-winning **Climate Action Program** is part of the City Manager's office and acts as a City and Community resource on emissions mitigation and climate adaptation. Since its inception in 2007, the program is tasked with working collaboratively the community to implement City's Climate Adaptation Plan and Climate Action Plan and achieving its 12 climate action milestones.

The award-winning **Santa Cruz Wastewater Treatment Facility** operates and maintains a regional wastewater treatment and disposal facility. Wastewater treatment is provided for the City of Santa Cruz and the Santa Cruz County Sanitation District including Live Oak, Capitola, Soquel and Aptos.

ARTISTS

Greg Sullo is a sound artist from Massachusetts, currently residing in Santa Cruz, California. His work focuses on our auditory world and the processes by which we listen. By offering new contexts and structures for listening, he hopes to uncover new ways for understanding the world around us. Listening Pipe plays recordings of water flowing through the pipe back through the pipe itself using audio exciters and a battery-powered amplifier, calling attention to both the often inaudible process of water through the pipe and the materiality of the pipe.

Shawn Shafner ("The Puru") is an artist, educator and activist. Creator of The People's Own Organic Power Project (www.thePOOPproject.org), he has catalyzed conversation about sustainable sanitation from the top of NYC's largest wastewater treatment plant to the floor of the United Nations. Shawn's show *An Inconvenient Poop* was a Time Out NY Critic's Pick and 2015 NY International Fringe Festival Award Winner for Overall Excellence in Solo Performance. Other major works include the feature documentary *Flush*, family musical *Innie / Outie*, and monthly episodes of *SHHH: The Poopcast* (aka Shit and Shame with Shawn). Shawn is also an accomplished teacher, singer, theater-maker, and community-based artist who has received numerous fellowships.

The Bureau of Linguistical Reality is an interactive artwork that collaborates with the public to create new words for feelings and experiences for which no words yet exist.

Jon Cohrs is a director and visual artist based in Brooklyn, NY. His work often uses public engagement and site-specific explorations to address global issues. **Morgan Levy** is a postdoctoral researcher currently investigating hydrological, climatological, and environmental determinants of disease in the Environmental Health Sciences Division at the UC Berkeley.

Mark Shunney moved to the Bay Area from New York City in 2005. After completing his MFA in Sculpture at Rhode Island School of Design. Mark entered into the early founding of the art district in Chelsea (NYC) and worked at the Andrea Rosen Gallery before opening his own gallery in D.U.M.B.O., Brooklyn. Brooklyn Front, operated from June 2001 – September 2002, focused on emerging artists and projects that challenged the expectations of the white cube. Mark's home and studio are in Santa Cruz where he works part-time as the gallery manager and assistant curator at the UC Santa Cruz, Sesnon Art Gallery, Stanford University Art and Art History exhibitions program and operates an artist project space called Art Research Office (ARO).

Kathleen Deck has sought innovative paths and connections between creativity and sustainability to develop her arts research practice at the intersection of art and science. She is a new media artist MFA candidate at the University of California Santa Cruz, interested in themes of sustainability and climate change. Through her artistic research practice, she seeks to create work that challenges viewers to become actively engaged and educated in environmental issues with the hope that an informed public can help forge a more sustainable society.

Lize Mogel is an interdisciplinary artist and counter-cartographer. Her work intersects the fields of popular education, cultural production, public policy, and mapping. She creates maps and mappings that produce new understandings of social and political issues. She has mapped public parks in Los Angeles; future territorial disputes in the Arctic; and wastewater economies in New York City. She is co-editor of the book/map collection "An Atlas of Radical Cartography," a project that significantly influenced the conversation and production around mapping and activism. She has lectured extensively about her work nationally and internationally, including at the 2013 Creative Time Summit. Lize has received grants from the Graham Foundation, the New York Foundation for the Arts, the Jerome Foundation, and the Danish Arts Council. She has been an artist in residence at Headlands Center for the Arts, Community Artist-in-Residence at the Whitney Museum, and is currently part of the inaugural Research & Design group for Fresh Kills Park in New York City.

Karina Mangu-Ward is a Brooklyn-based facilitator, process designer and filmmaker. As an independent filmmaker, Karina's documentary projects use non-fiction media, interactive content, and social networks to spread big ideas. Since 2008, she has produced or directed over 45 shorts films and is working on her first feature film. Karina has an MFA in Theater Management and Producing from Columbia University and an AB from Harvard University.

Futurefarmers is a group of diverse practitioners aligned through an interest in making work that is relevant to the time and place surrounding us. Founded in 1995, the design studio serves as a platform to support art projects, an artist in residence program and our research interests. We are artists, researchers, designers, architects, scientists and farmers with a common interest in creating frameworks for exchange that catalyze moments of "not knowing". Futurefarmers work has been exhibited at the Whitney Museum of American Art, the New York Museum of Modern Art, Solomon R. Guggenheim, MAXXI in Rome, Italy, New York Hall of Sciences and the Walker Art Center.

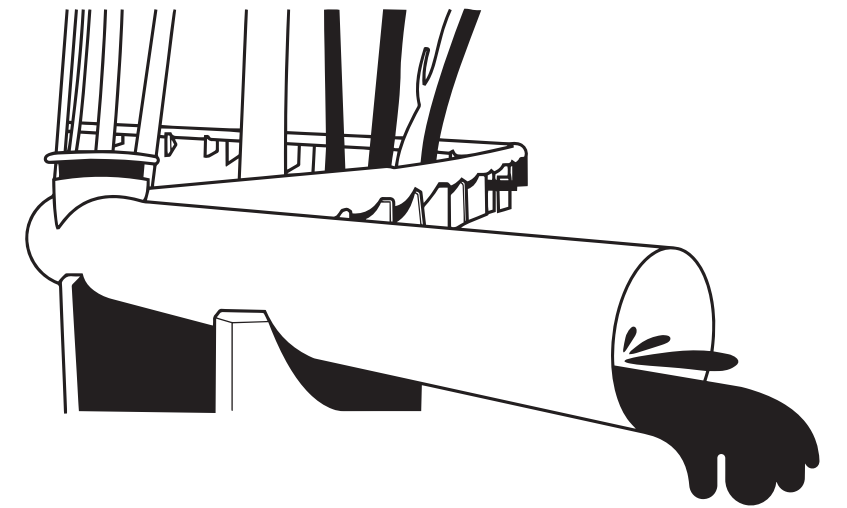
FICTILIS is an independent artist and curatorial collective based in Oakland. The Wastewater Walk was organized with the help of an undergraduate research group in the Digital Arts & New Media program at UC Santa Cruz, led by Kathleen Deck and including Barbara Donahue, Frances Maurer, Jessica Mosleh, and Claire Watts.

FOLLOW THE FLUSH

The 2018 Santa Cruz Wastewater 5K Walk

May 5, 2018
9am-3pm

East Remote Lot to Neary Lagoon Park
Santa Cruz Wastewater Treatment Plant



santa cruz
cityarts



Sustainability
Office
UNIVERSITY OF CALIFORNIA
SANTA CRUZ